

# PRICES

## PITCHES IN 2023



# PRICES FOR 2023

les RIVES DU DOUET  
 avril 1st - sep. 30

### Freedom & trekking rate

	Low season April to June & Sept.	High season July & August
Duo camping rate **	€14,20	€17,90
Solo camping rate **	€9,95	€12,40
Duo trekker rate *	€10,10	€14,05
Solo trekker rate *	€8,15	€10,80
Monthly storage	€30,00	-

\* Package for holidaymakers on non-motorized trips (on foot or by bike)

### Other prices

Children (ages 3-10)	€4,05
Additional camper	€2,60
Day storage	€6,00
Drainage + water	€2,85
Van	€12,40
Animal (Limited to 2)	free

### Comfort+ trekker rate

1/2 pl.

	Low season April to June & Sept.	High season July & August
1 Treck - 1 Bivouac - 1 Moorea **	€22	€32
Compostela package (treck - bivouac - moorea)***	€25	€35

\*\* Prices including electricity and excluding the tourist tax.

\*\*\* Breakfast included for one person, additional breakfast 5,10 €



Bivouac



Treck



Moorea

Designed by: Town of Doué-en-Anjou - ©S. Simonnet - 2023



CAMPING LES RIVES DU DOUET

+33 (0)2 41 59 14 47 | +33 (0)6 22 71 25 53

contact@camping-lesrivesdudouet.fr

www.camping-lesrivesdudouet.fr



Doué  
 en  
 anjou

Un territoire Une dynamique

# PRICES

## RENTALS IN 2023



### OTHER PRICES

- > Deposit : €200
- > Cleaning fee : €60
- > Tourist tax : €0,20
- > Application fees :
  - rental for one week or more : €20
  - rental less than a week : €5
- > Rental of sheets/accommodation: €10

### Ecolodge Junior (1)

4/5 pl

21 m<sup>2</sup> + terrace- 2 BR :  
1 double bed (140 cm) and 3 single beds

	Low season april 1 to may 12 may 29 to july 7 sep. 2 to 30	Mid-season may 13 to 28 july 22 to august 4 august 26 to sep. 1	High season july 8 to 21 august 5 to 25
Price per night	€40	€53*	€65*
Price per week	€160	€265	€325
Price per fortnight	€320	€530	€650

### Victoria Lodge (2)

4/5 pl

30 m<sup>2</sup> + terrace- 2 BR :  
2 double beds (140 cm) and 1 loft bed (80 cm)

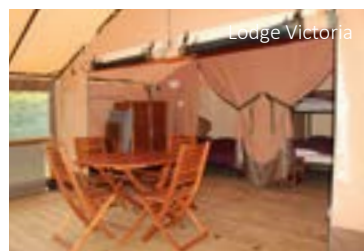
	Low season april 1 to may 12 may 29 to july 7 sep. 2 to 30	Mid-season may 13 to 28 july 22 to august 4 august 26 to sep. 1	High season july 8 to 21 august 5 to 25
Price per night	€40	€53*	€65*
Price per week	€160	€265	€325
Price per fortnight	€320	€530	€650

### Modern Lodge (1)

4 pl

20m<sup>2</sup> + terrace- 2 BR :  
1 double bed (140 cm) and 2 twin beds (80 cm)

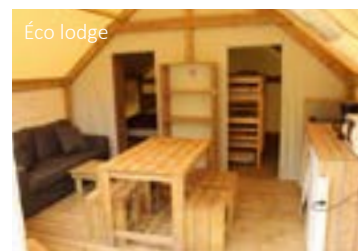
	Low season april 1 to may 12 may 29 to july 7 sep. 2 to 30	Mid-season may 13 to 28 july 22 to august 4 august 26 to sep. 1	High season july 8 to 21 august 5 to 25
Price per night	€35	€48*	€60*
Price per week	€140	€240	€300
Price per fortnight	€280	€480	€600



Lodge Victoria



Lodge Victoria



Eco lodge



### Coco Sweet (2)

4 pl

16m<sup>2</sup> + terrace- 2 BR :  
1 double bed (140 cm) and 2 twin beds (80 cm)

	Low season april 1 to may 12 may 29 to july 7 sep. 2 to 30	Mid-season may 13 to 28 july 22 to august 4 august 26 to sep. 1	High season july 8 to 21 august 5 to 25
Price per night	€35	€48*	€60*
Price per week	€140	€240	€300
Price per fortnight	€280	€480	€600

### Mobil home Manyara (1)

4 pl

34 m<sup>2</sup> + terrace- 2 BR : 1 double bed (140 cm) and  
2 twin beds (70 cm), 2 bathrooms

	Low season april 1 to may 12 may 29 to july 7 sep. 2 to 30	Mid-season may 13 to 28 july 22 to august 4 august 26 to sep. 1	High season july 8 to 21 august 5 to 25
Price per night	€60	-	-
Price per week	€300	€350	€410
Price per fortnight	€600	€700	€820



\*2 nights minimum

# USEFUL

# INFORMATION

## Services

- Basic groceries and entertainment (July and August)
- Deposit of bread (July and August)
- Breakfast (July and August)
- Baby equipment and bed linen rental on request
- Inventory available on request

## Payment methods

- Cash
- Checks
- Holiday vouchers
- VACAF
- Visa credit card- Master Card
- Bank transfer

## Discounts

ANWB, FFCC- ICC members (5% the high season, 10% the low season on bare pitches)

VACAF - ANCV (5% on bare pitches)

Stays of more than one month-10%

## Pets

Pets are allowed at the campground at no additional cost. For safety reasons though, they must be tattooed or microchipped and kept on leads. They must also be registered on arrival, with their up-to-date vaccination records.

Attack dogs and guard dogs are not allowed in the campground.

## Accessibility

All locations, excluding accommodation, and sanitary facilities are accessible to people with reduced mobility

## Contacts

Reception hours

April- May- June- Sep : 9am-12pm •

3pm-7pm

July- August : 8.30am-12pm • 2pm-8pm

**Doué**  
en  
**anjou**

Un territoire  Une dynamique



**CAMP** 

by  **VVF**

**CAMPING LES RIVES DU DOUET**

**+33 (0)2 41 59 14 47 | +33 (0)6 22 71 25 53**

[contact@camping-lesrivesdudouet.fr](mailto:contact@camping-lesrivesdudouet.fr)

[www.camping-lesrivesdudouet.fr](http://www.camping-lesrivesdudouet.fr)